

InDesign CS4, CS3 & CS2 / Print PostScript® Files

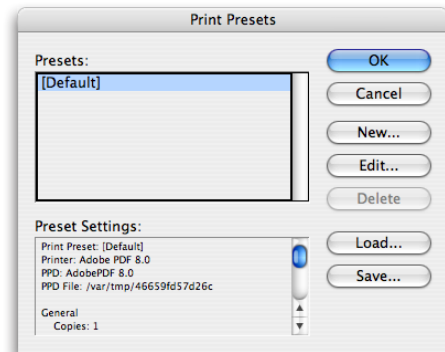
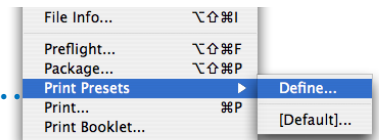
FOR HIGH-RESOLUTION CMYK WORKFLOW

BEFORE YOU START

- Under the InDesign Edit menu / Color Settings, Settings: Emulate Adobe InDesign 2.0 CMS Off

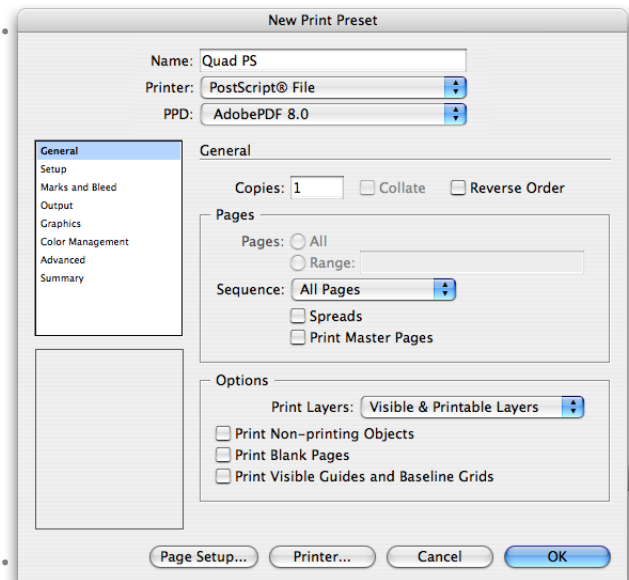
CREATE A PRINT PRESET.....

- Under the File menu / Print Presets / Define, choose New...
- Name the print preset
- Printer: PostScript® File
- PPD: AdobePDF 7.0, 8.0 or 9.0



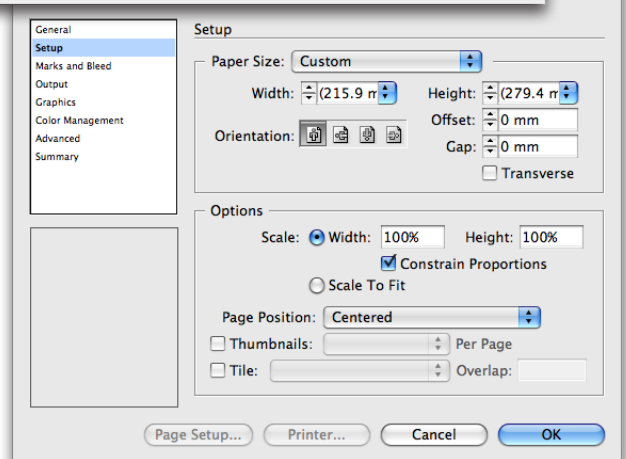
GENERAL.....

- Pages: Print single-page files. Enter range here.
- Options: all off



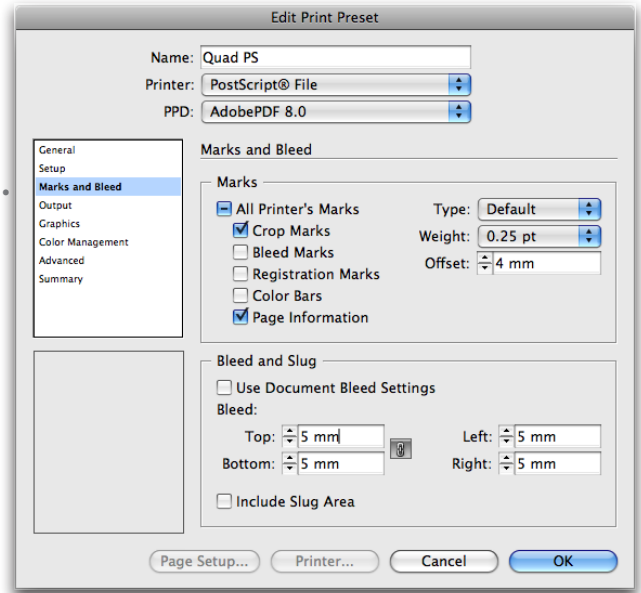
SETUP

- Paper Size
- Paper Size: Custom
- Width & Height: Auto
 - These measurements (in parentheses) will at first default to your trim/document size.
 - After the 5 mm Bleed settings are applied, the width and height measurements will be 24 mm greater.
- Offset: 0
- Gap: 0
- Scale: 100%
- Page Position: Centered



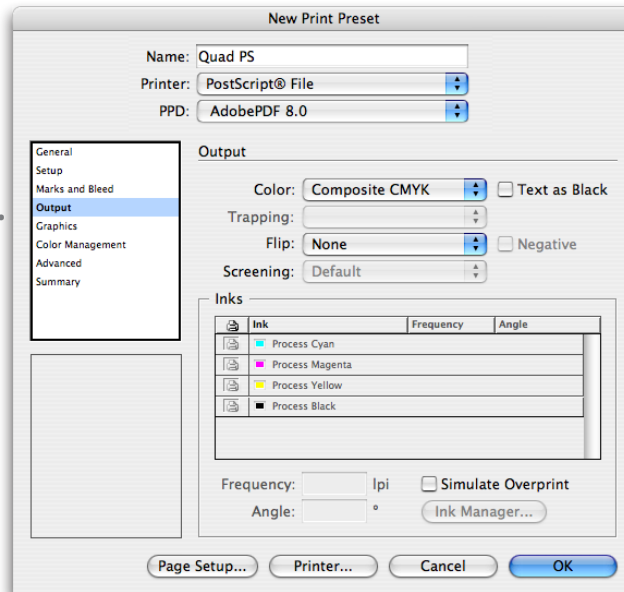
MARKS & BLEEDS.....

- Printer's Marks: check Crop Marks & Page Information
 - Weight: .25 pt (0.08 mm)
 - Offset: 4 mm
 - Bleed: All Sides: 5 mm
- If you were to go back to the Setup tab now, you'd see that both the Width and Height fields are now 24 mm greater than the trim/document size.
- Include Slug Area: Off



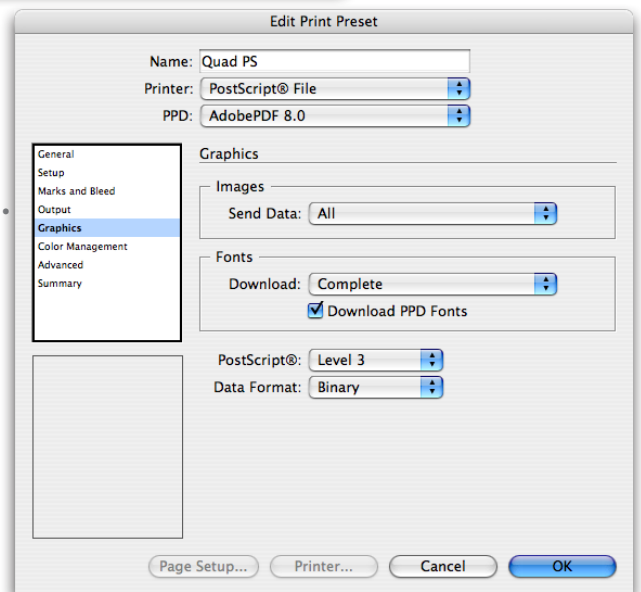
OUTPUT.....

- Color: Composite CMYK



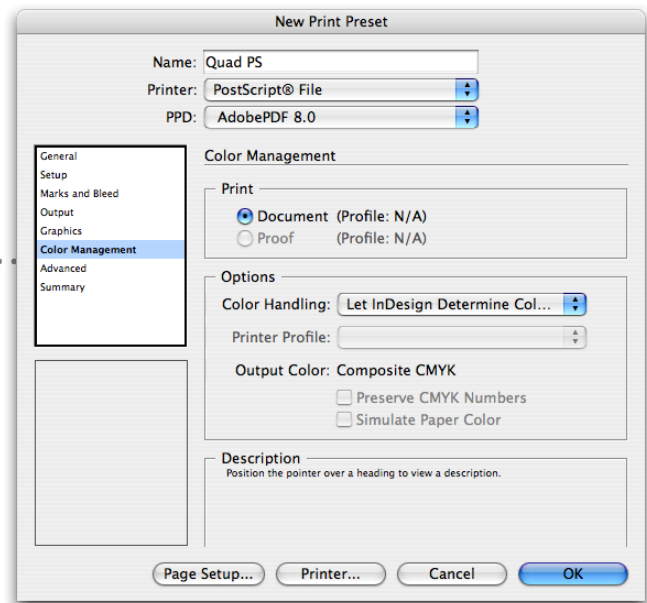
GRAPHICS.....

- Images / Send Data: All
- Fonts / Download: Complete
- Download PPD Fonts
- PostScript®: Level 3
- Data Format: Binary



COLOR MANAGEMENT

- Document (Profile: N/A)
- Color Handling: Let InDesign Determine Colors

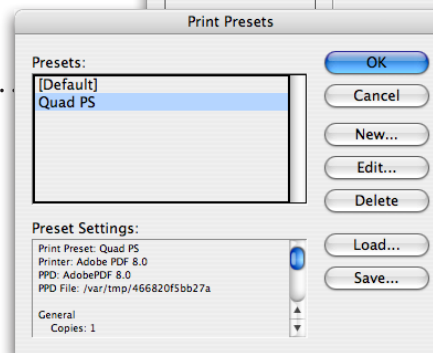
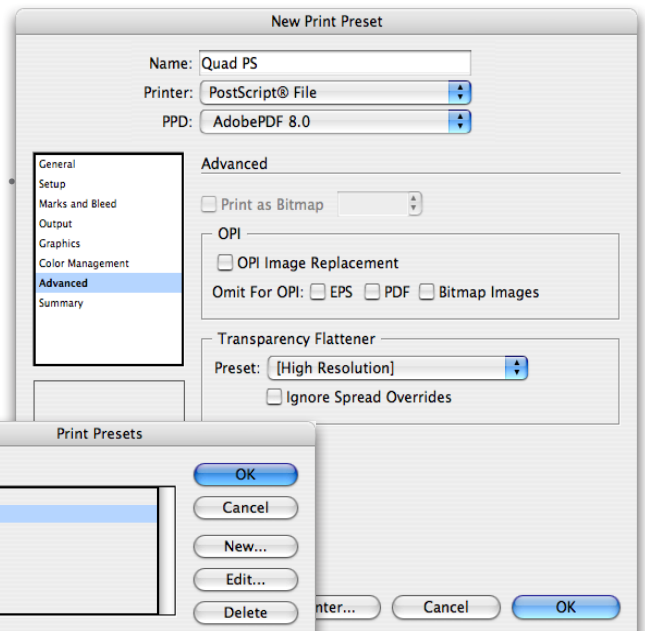


ADVANCED

- OPI Image Replacement: Off
- Omit for OPI: All Off
- Transparency Flattener Preset: High Resolution
- Ignore Spread Overrides: Off

• Click OK in the Print dialog box

• Click OK to save the Print Preset



PRINT USING A PRESET

- 1) Choose File/Print Presets/desired Preset
- 2) Choose it from the Preset pulldown at the top of the Print Dialog box.

SAVING AND LOADING PRINT PRESETS

Instead of recreating it on all necessary workstations, save and archive the Print Preset for future use.

- 1) Choose File/Print Presets/Define
- 2) Click on the Preset and then click Save
- 3) Name and save it in the desired location
- 4) To import the Preset, follow the same procedure but click Load (at step 2) to find and import it.